

**Technolution**

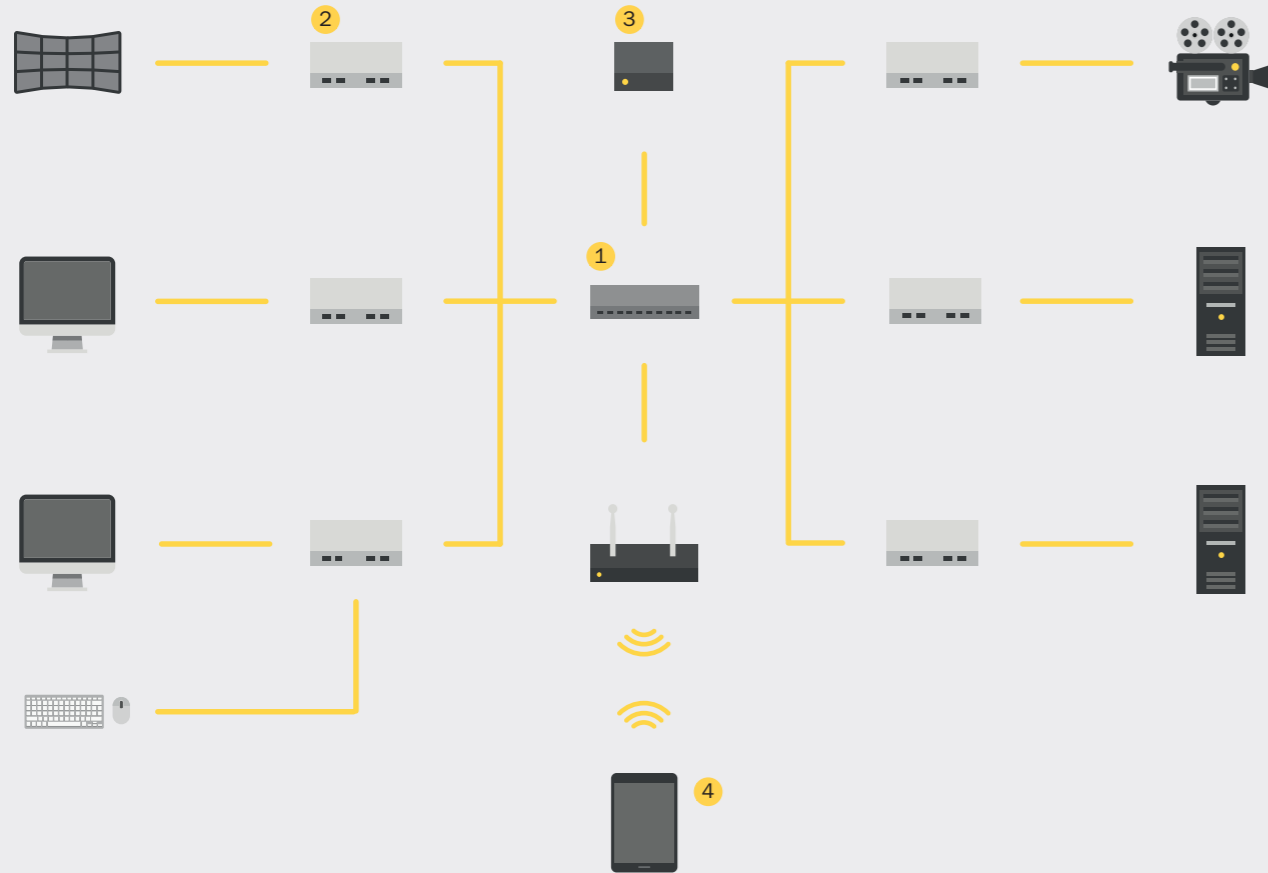
**SigmaXG**



**Ultrafast video switching**  
Intuitive, lossless, scalable and reliable

SigmaXG allows you to manage video without any latency and with incredible ease of use, preserving source image quality. With SigmaXG, you can connect multiple video sources to all the screens you need through an IP network.

Control any video source from any connected screen.



## A SigmaXG installation

### 10G Network Switch (1)

The core of the SigmaXG System is an (off-the-shelf) 10G IP network switch. All SigmaXG components are connected through 10G fiber connections.

### SigmaXG Ndcoders (2)

The Ndcoders are SigmaXG's interface modules for the input and output of video, audio and control signals. They are available for various types of video interfaces. The Ndcoders perform all required scaling, frame rate and format conversions. They support MultiView, MouseThru, TouchThru and LoopBack.

### SigmaXG Server (3)

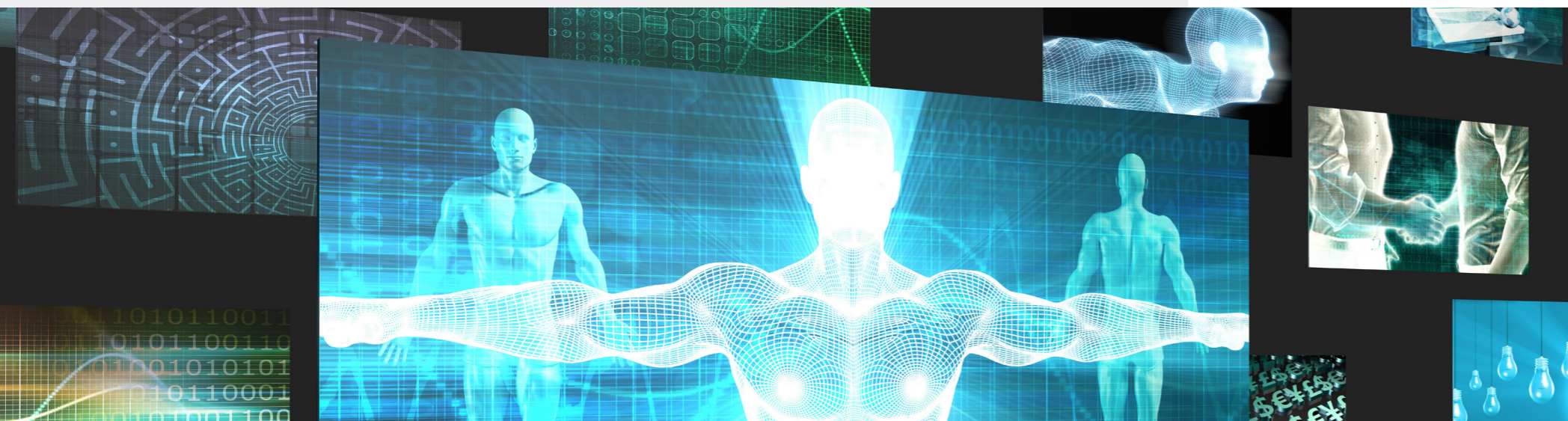
This is the software package that controls the SigmaXG network. It communicates with the Ndcoders to create channels. The SigmaXG Server software runs on a PC connected to the network switch.

### SigmaXG User API (3)

The User API provided by the SigmaXG server makes it easy to create user applications to integrate SigmaXG networks into your own systems.

### SigmaXG App (4)

You can start using the SigmaXG app and SigmaXG functionality as soon as you install the system. This app makes it easy to experience the functionality of SigmaXG: just drag and drop.



- ▶ Scalable and easy to extend
- ▶ Very fast
- ▶ Without any information loss
- ▶ Supports mouse, keyboard & touch over networks

## Fastest video over IP solution

Communication in the 21st century is becoming more and more visual. Digital video is everywhere. We want to be able to share video without compromise. With perfect quality, complete control, and without any delay.

### **Ease of use**

SigmaXG makes sharing of video over IP/Ethernet easy. The unique NDcoder concept integrates a video encoder and a video decoder into one single box. The SigmaXG software (API) allows you to decide whether to use the device as an encoder, a decoder, or both at the same time. You have full flexibility with half the number of boxes you would typically need.

### **Lightning fast**

With 10 gigabit Ethernet, video streams up to 4K are distributed with perfect quality (no compression) and with zero latency. The switch from one video source to the next is seamless, and takes place in the blink of an eye.

### **One cable**

SigmaXG only uses a single cable to distribute video, audio and control signals.

### **You are in control**

The MouseThru functionality gives you effortless control over your systems via the network, even when you are viewing multiple streams on one display (PiP, Side-by-Side, Quad-View and more). SigmaXG will send your actions to the correct PC at the click of a mouse or a tap on the touchscreen. SigmaXG gives you complete control!

## More information



### **Adriaan Schipper**

Contact via +31 (0) 182 59 4140 and [info@sigmaxg.com](mailto:info@sigmaxg.com) or go to [www.sigmaxg.com](http://www.sigmaxg.com).

## Technolution

SigmaXG is a product of Technolution. Our knowledge of video distribution and our technological expertise enable us to create the right solutions for our customers. We develop new technologies through investment in our own R&D and we test them thoroughly before we apply them to our products. Because we create working systems and products, we can build long-term relationships with our customers.

Burgemeester Jamessingel 1  
P.O. Box 1013  
2800 BD GOUDA  
The Netherlands

[www.technolution.com](http://www.technolution.com)

